

MISSED SIGNS OF DRUG MISUSE

During the pandemic, **TELEHEALTH** has made it harder for physicians to recognize the risks or the signs of drug misuse



75% of doctors believe telehealth limits their ability to determine whether patients are misusing or are at risk¹



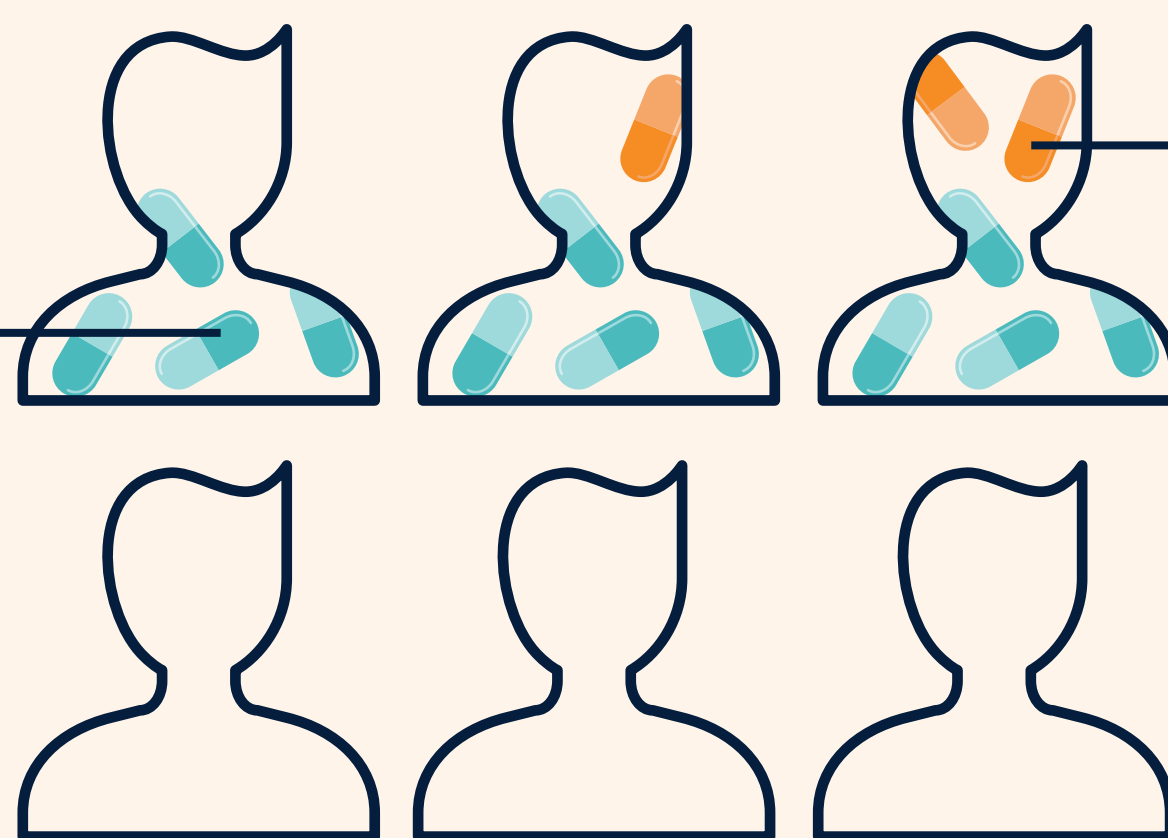
67% worry that they have missed signs of drug misuse in one or more patients¹



50% don't feel confident they can recognize signs of misuse using telehealth¹

WHEN TESTED¹:

Nearly **HALF** of patients showed signs of drug misuse



... and **HALF** of these showed dangerous drug combinations

CLINICAL DRUG TESTING can help guide the way!



85% of physicians recently surveyed agreed that clinical drug testing gives them more confidence to prescribe safely¹

